

# Placer County SELPA Open Access Project



## ***Special Education Resource Lead:***

*Content Lead within California's  
Statewide System of Support  
(CDE & CCEE)*

### **Quarter # 2 Report**

December 2020 -  
February 2021



**Key Activities**



**Key Resources**



**Metrics**

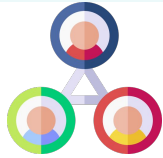


**Upcoming Events**

# Learning & Participation for All



## Key Activities



### Building Community & Shared Understanding

Date	Description	Location
1/15/21	Check in meeting with Humboldt COE Regional Lead team [UDL]	Virtual
1/21/21	Check in meeting with Desert Mountain SELPA Regional Lead team [UDL]	Virtual
1/25/21	OA Project Overview meeting with Sonoma County SELPA Regional Lead team [AT]	Virtual
1/27/21	Check in meeting with East San Gabriel Valley SELPA [AT]	Virtual
2/1/21	OA Project Overview meeting with Humboldt COE Regional Lead team [UDL]	Virtual
2/2/21	Check in meeting with East San Gabriel Valley SELPA [AT]	Virtual
2/18/21	Check in meeting with Downey Montebello SELPA [UDL]	Virtual
2/26/21	AAC Community of Practice - Regional Leads "Supporting the Grid App and other Related AT Supports" ( <a href="#">click here</a> for slides)	Virtual
2/26/21	Informational meeting with Santa Barbara County SELPA	Virtual

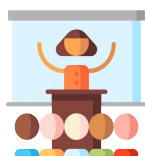


### Supporting Implementation

Date	Description	Location
12/8/20	Debrief/Implementation Planning meeting and Introduction to Instructional Rounds with Whittier SELPA Regional Lead Team [UDL]	Virtual
12/8/20	Introduction to Instructional Rounds with Desert Mountain SELPA Regional Lead Team [UDL]	Virtual

## Supporting Implementation, continued

Date	Description	Location
12/8/20	Debrief/Implementation Planning meeting with East San Gabriel Valley /Antelope Valley Regional Lead Team [AT]	Virtual
12/9/20	Debrief/Implementation Planning meeting with Glenn County SELPA Regional Lead team [AAC]	Virtual
1/6/21	Debrief/Implementation Planning meeting with San Benito County SELPA Regional Lead team [AAC]	Virtual
1/13/21	Debrief/Implementation Planning meeting with Monterey County SELPA Regional Lead team [AAC]	Virtual
1/14/21	Debrief/Implementation Planning meeting and Introduction to Instructional Rounds with Siskiyou County Office of Education Regional Lead team [UDL]	Virtual
2/25/21	Debrief/Implementation Planning meeting with Shasta COE Regional Lead team [UDL]	Virtual



## Training

Date	Description	Location
12/1/20	<b>Digital Tools and Assistive Technologies</b> training (3 hours) with East San Gabriel Valley/Antelope Valley SELPAs	Virtual
12/2, 12/14, & 2/3/20	<b>Digital Tools and Assistive Technologies</b> training (9 hours) with Humboldt Del Norte SELPA	Virtual
12/2, 12/8/20	<b>AAC Foundations</b> training (6 hours) with Monterey County SELPA	Virtual
1/6/21	<b>UDL Refresher</b> training (2 hours) with Shasta COE	Virtual
1/12, 1/13, 1/19 & 1/20/21	<b>UDL Immersion</b> training (12 hours) with West End SELPA	Virtual
1/20, 2/10 & 2/24//21	<b>Student Access Planning &amp; Quality AT Practices</b> training (9 hours) with East San Gabriel Valley/Antelope Valley SELPAs	Virtual

## Training, continued

Date	Description	Location
1/25, 2/1, 2/22/21	<b>AAC Foundations</b> training (9 hours) with North Inland County SELPA	Virtual
1/27, 2/10 & 2/24/21	<b>AAC Implementation (Tier 2)</b> training (9 hours) with San Benito County SELPA	Virtual
1/28, 2/4 & 2/11/21	<b>AAC Foundations</b> training (9 hours) with Irvine USD SELPA	Virtual
2/3, 2/17/21	<b>AAC Foundations</b> training (6 hours) with Monterey County SELPA [YOU do]	Virtual
2/12, 2/26/21	<b>UDL/AT Immersion</b> training (6 hours) with Sonoma County SELPA	Virtual
2/22/21	<b>UDL Immersion</b> training (3 hours) with Humboldt COE	Virtual
2/25/21	<b>UDL in Instruction: Writing Goals</b> training (1 hour) with San Luis Obispo SELPA	Virtual



## Coaching

Date	Description	Location
12/3/20	Coaching session with Shasta COE Regional Lead team [UDL]	Virtual
12/3/20	Coaching session with San Luis Obispo SELPA Regional Lead team [UDL]	Virtual
12/15/20	Coaching session with Butte County SELPA Regional Lead team [UDL]	Virtual
1/15/21	Coaching session with Shasta COE Regional Lead team [UDL]	Virtual
1/21/21	Coaching session with Desert Mountain SELPA Regional Lead team [UDL]	Virtual
1/25/21	Coaching session with West End SELPA Regional Lead team [UDL]	Virtual
1/28/21	Coaching session with Shasta COE Regional Lead team [UDL]	Virtual
2/3/21	Coaching session with San Luis Obispo SELPA Regional Lead team [UDL]	Virtual
2/4/21	Coaching session with West End SELPA Regional Lead team [UDL]	Virtual

## Coaching, continued

Date	Description	Location
2/5/21	Coaching sessions with AAC Tier 2 (Implementation) participants	Virtual
2/18/21	Coaching session with Whitter SELPA Regional Lead team [UDL]	Virtual
2/19/21	Coaching sessions with AAC Tier 2 (Implementation) participants	Virtual
2/22/21	Coaching sessions with AAC Tier 2 (Implementation) participants	Virtual
2/23/21	Coaching session with Shasta COE Regional Lead Team [UDL]	Virtual
2/23/21	Coaching session with Humboldt COE Regional Lead team [UDL]	Virtual

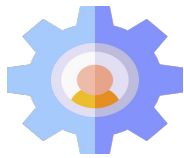


## Connecting

Date	Description	Location
12/3/20	CITES/CAST Framework Development District Check In	Virtual
12/9/20	Capital Central Foothill Area Consortium Geo Lead - UDL Huddle	Virtual
12/10/20	CITES/CAST Tips: Effective Teamwork in Virtual Settings	Virtual
1/4, 1/6/21	Interviews - EWIG/CCIL Implementation Specialist	Virtual
1/7/21	CITES/CAST Tips: UDL and Leadership	Virtual
1/21/21	CITES/CAST Framework Development District National Cohort team meeting	Virtual
1/22/21	Capital Central Foothill Area Consortium Geo Lead - Meeting	Virtual
2/2/21	SELPAs in the Statewide System - Quarterly Check In	Virtual
2/3/21	Check in meeting with CCEE (David Toston)	Virtual
2/4/21	CA UDL Coalition - State Capacity Assessment	Virtual

### Connecting, continued

Date	Description	Location
2/11/21	Collaboration with Imperial County SELPA	Virtual
2/12/21	EWIG/CCIL Team Meeting	Virtual
2/17/21	Capital Central Foothill Area Consortium Geo Lead - UDL Huddle	Virtual
2/24/21	CITES/CAST Framework Development District Check In	Virtual
2/26/21	Statewide System of Support - All Leads Meeting	Virtual



## Dissemination

Date	Description	Location
2/11/21	Overview of Open Access Resources for Imperial County SELPA ( <a href="#">click here</a> for slides)	Virtual
2/22/21	Overview for CDE FMTA I and IV ( <a href="#">click here</a> for slides)	Virtual





## Key Resources

### NEW Resources



*Each quarter, we'll highlight a few new resources that have been developed to support our projects, trainings or coaching activities. This quarter, we are going to highlight some resources that have been developed to support our focus area of assistive technology.*

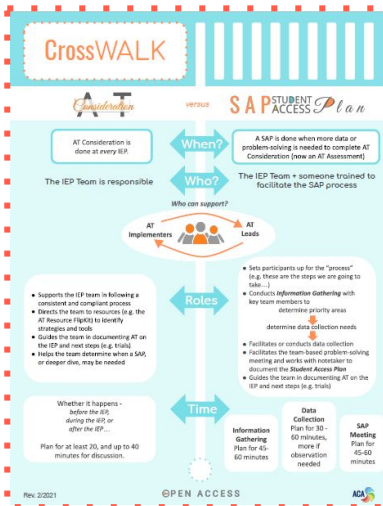
This quarter saw our rollout of the **Student Access Planning** and **Quality Assistive Technology Practices** trainings within our first three regions participating in **Accessible Curriculum for All (AT)** (Antelope Valley SELPA, East San Gabriel Valley SELPA and Humboldt-Del Norte SELPA). Within these trainings we focus on a team-based, problem-solving approach for AT assessment. We also provide training and resources around quality AT practices, including conducting trials, developing implementation plans, documenting AT in the IEP and making sure strategies and tools follow our students through normally-occurring transitions.

Click thumbnail  
to open!



**The Student Access Planning Guide** compiles all of the information and resources our site-based teams need for conducting team-based AT assessment and following through with good implementation practices.

Check out some of our **Best Practice or Quick Guides** (1 page handouts) to support key concepts and practices.



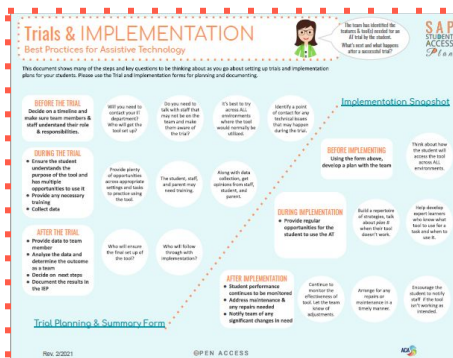
AT Consideration vs Student Access Planning - crosswalk comparing these two activities.



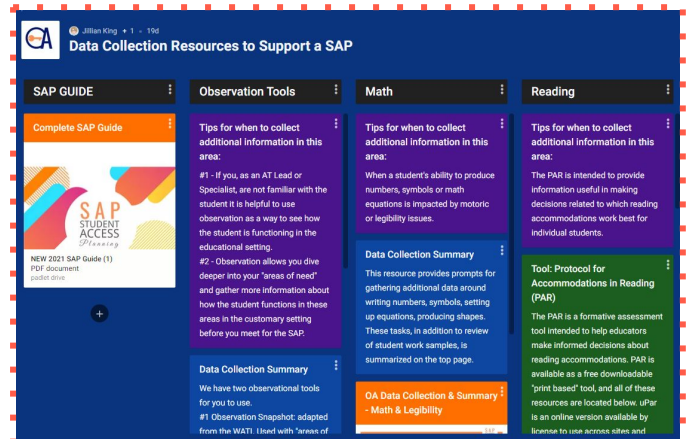
Quick Guide to the Student Access Plan - what are the steps in the team-based AT assessment process?



Quick Guide to Documenting AT in the IEP



Best Practices for AT Trials and AT Implementation - what do we do before, during and after?



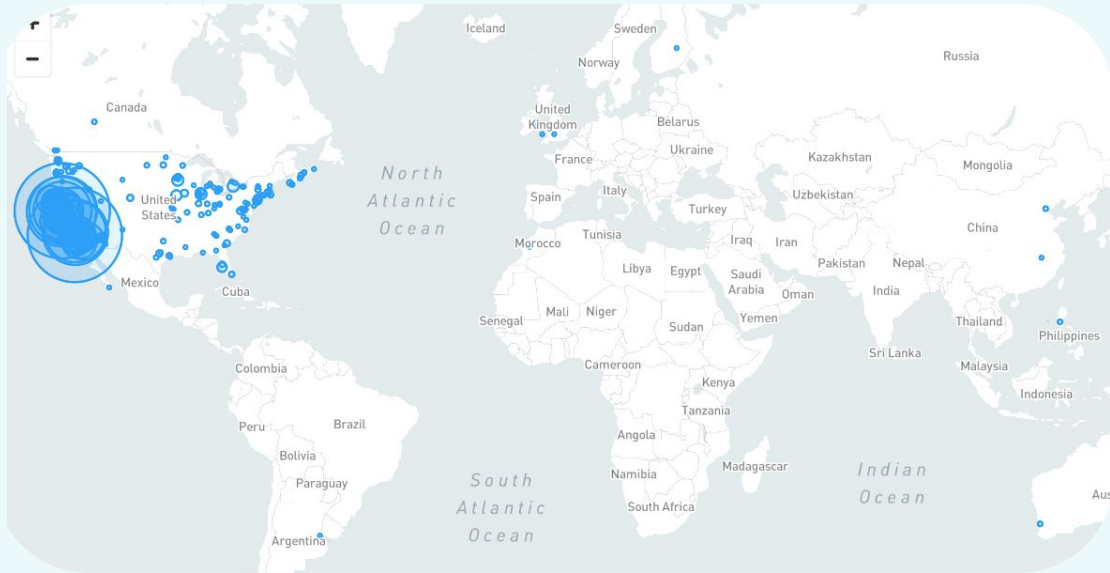
Explore our Padlet summarizing Data Collection Resources to Support a Student Access Planning Process - what data collection tools and resources do our AT Leads have access to support a comprehensive AT assessment process?





## Metrics

### Website Traffic



## Open Access Main Site

Q2

3,979 Sessions

1,595 Unique Visitors

To Date

16,675 Sessions

7,189 Unique Visitors

## Accessible Distance Learning Site

Q2

362 Sessions

271 Unique Visitors

To Date

4,148 Sessions

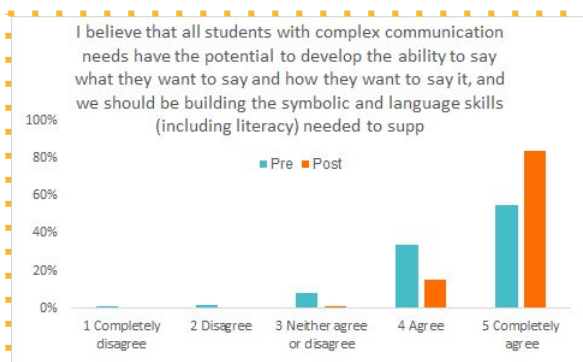
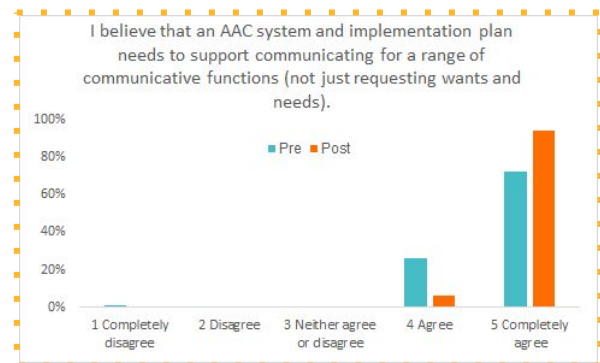
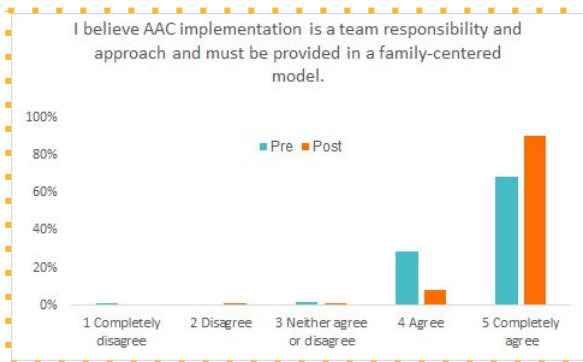
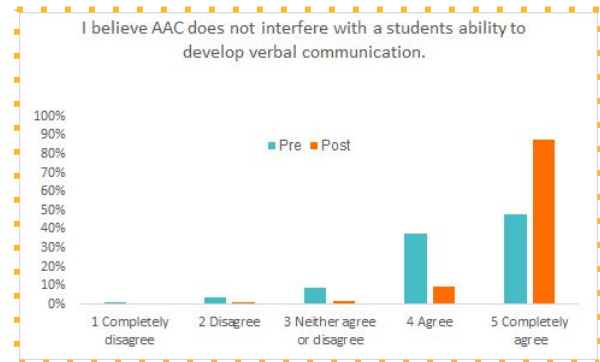
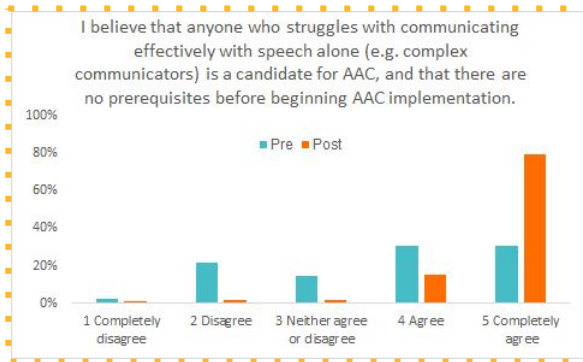
2,578 Unique Visitors

# Training Outcomes



Each quarter, we'll highlight some of the data from metrics we are collecting.

The primary purpose of **AAC Foundations** is to establish **shared beliefs** about our complex communicators between all team members. What are our participants telling us about their beliefs about our complex communicators pre- and post- training? [data from first six cohorts of "we do" training]



Training Hours to Date:

220.5 hours of training

Training Participants to Date:

629 participants



## Upcoming Events

# What key activities are coming up in the next quarter?

*As we move into March 2021, we are focused on continuing to build our regional leadership teams to support their future capacity building efforts.*



Our two newest Regional Lead teams have completed their overviews of the project and have participated in the **UDL Immersion** training (Humboldt-Del Norte SELPA and West End SELPA).

We have several Regional Lead teams who are in Year 1 (“we do”) cycles of supporting site-based teams in their exploration and installation of UDL practices. This includes guiding the teams through the process of UDL-focused **Instructional Rounds** (a protocol used to build commonality of effective teaching and learning using a UDL lens, putting educators in charge of this learning, and providing data to inform UDL implementation over time). Regional Lead teams are guiding sites in the development of their Implementation Plans, and are providing coaching as teachers participate in our **UDL Instruction** modules (Butte County SELPA, Desert Mountain SELPA, San Luis Obispo County SELPA, Shasta County SELPA, Siskiyou County SELPA, Whittier Area Cooperative SELPA).

We are in the early planning stages with Downey-Montebello SELPA and Merced County SELPA to begin next fall.



We have three Regional Lead teams who are embarking on the first sequence of trainings (“we do”) - **UDL/AT Immersion, Digital Tools & Assistive Technologies, the Student Access Planning Process and Quality AT Practices** (Irvine Unified SELPA, North Orange County SELPA, Sonoma County SELPA). All three of these sequences will wrap up in the fall, and we will then plan for and launch Year 2 (“you do”).

We have three Regional Lead teams who have wrapped up this Year 1 (“we do”) training cycle and are beginning planning for year 2 (“you do”) (Antelope Valley SELPA, East San Gabriel Valley SELPA, Humboldt-Del Norte SELPA).

We are beginning to plan for the launch of additional projects starting later this year and into Fall (Merced County SELPA, Mendocino County SELPA, North Inland SELPA, Santa Clara SELPA, West End SELPA).



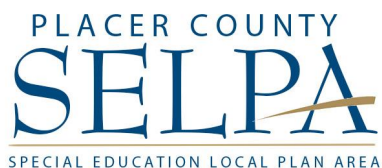
We have several Regional Lead teams who have completed a round of **Tier 1 - AAC Foundations** (“we do”) with teams of participants from across their regions (Irvine Unified SELPA, North Inland SELPA, North Orange County SELPA, Aspire Public Schools, Glenn County SELPA, Monterey County SELPA). These teams will be completing their “you do” phase with Tier 1 by Fall of next year and will be leading these trainings with coaching support from Open Access staff moving forward.

San Benito County SELPA is piloting our virtual round of **Tier 2 - AAC Implementation** (“we do”) with speech-language pathologists from across their region. This includes eight 3-hour sessions of intense training, with practice and coaching in-between in the AAC Needs Assessment process and guiding AAC implementation with classroom based teams.

We will be planning to launch at least one, and possibly two, additional projects by summer in order to have all of our AAC projects on track to finish in the next two years (Merced County SELPA, possible West End SELPA).



*A Project Developed and  
Supported by*



*Our Partners*



 OPEN ACCESS

Placer County SELPA, 2021